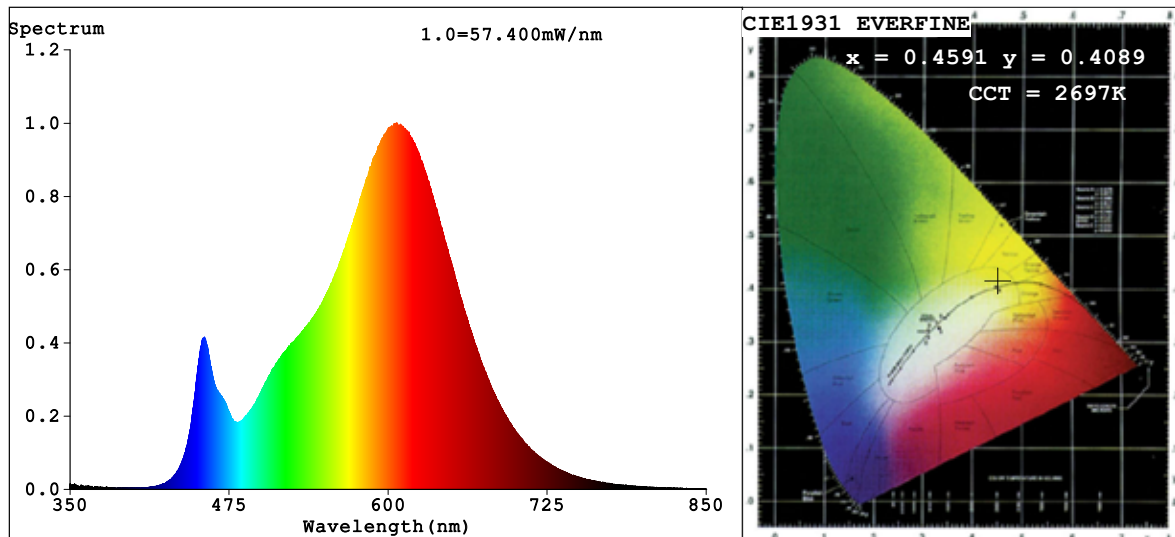


Spectrum Test Report



Color Parameters:

Chromaticity Coordinate: $x=0.4591$ $y=0.4089$ $u'=0.2628$ $v'=0.5266$
 $CCT=2697K$ ($Duv=-0.0006$) Dominant WL: $\lambda_d = 584.4nm$ Purity=60.6%
 Ratio: R=25.3% G=72.3% B=2.4%; Peak WL: $\lambda_p = 606.9nm$ FWHM=112.5nm
 Render Index: $R_a=82.5$ CRI=78.0 TM30: $R_f=82$ $R_g=95$

R1 =82	R2 =93	R3 =93	R4 =79	R5 =82	R6 =93	R7 =80
R8 =57	R9 =9	R10=85	R11=79	R12=76	R13=85	R14=97
						R15=74

Photo Parameters:

Flux = 2583 lm Eff. : 121.17 lm/W Φ_e = 8.031 W

Electrical parameters:

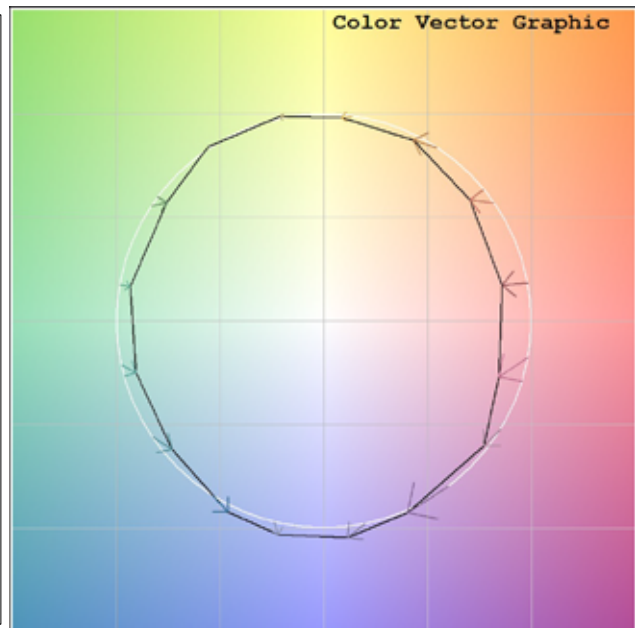
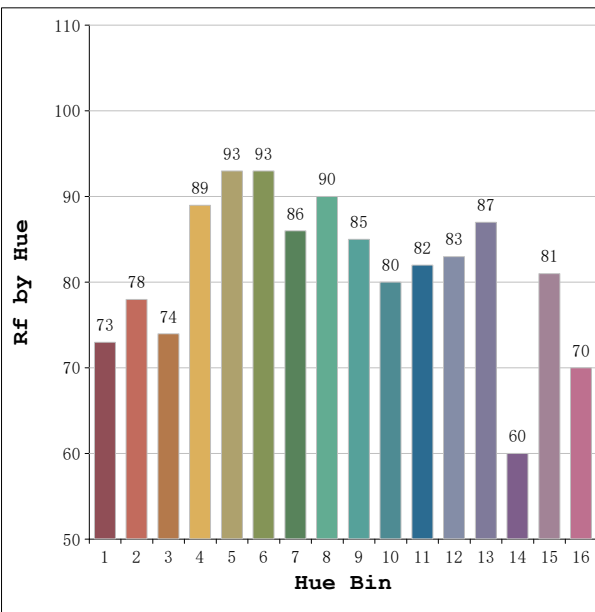
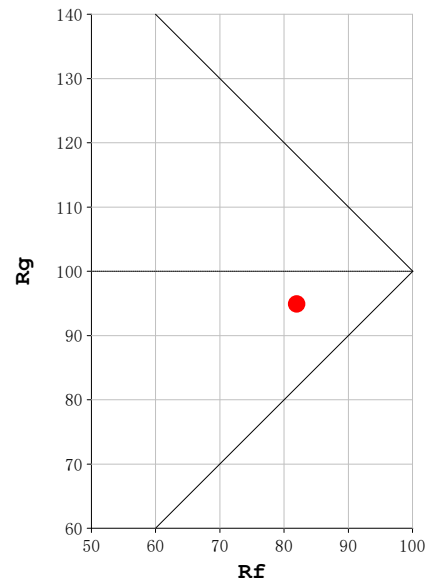
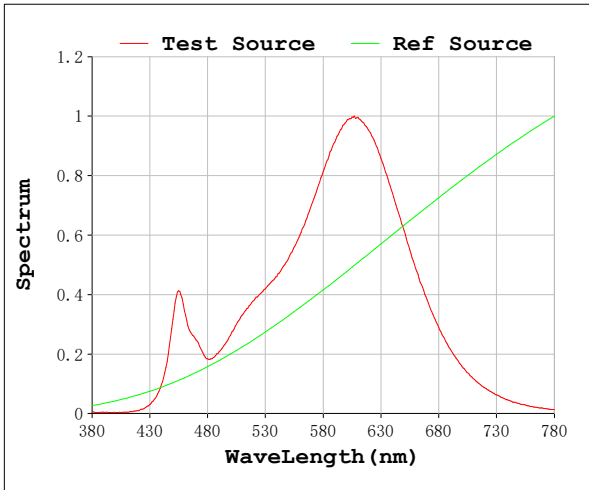
V = 23.998 V I = 0.8883 A P = 21.32 W PF = 1.000

Status: Integral T = 441 ms I_p = 49743 (76%)

Model: Ecoled Elite 20 2700K
 Tester: MªAngeles
 Temperature: 25Deg
 Manufacturer: Luz Negra

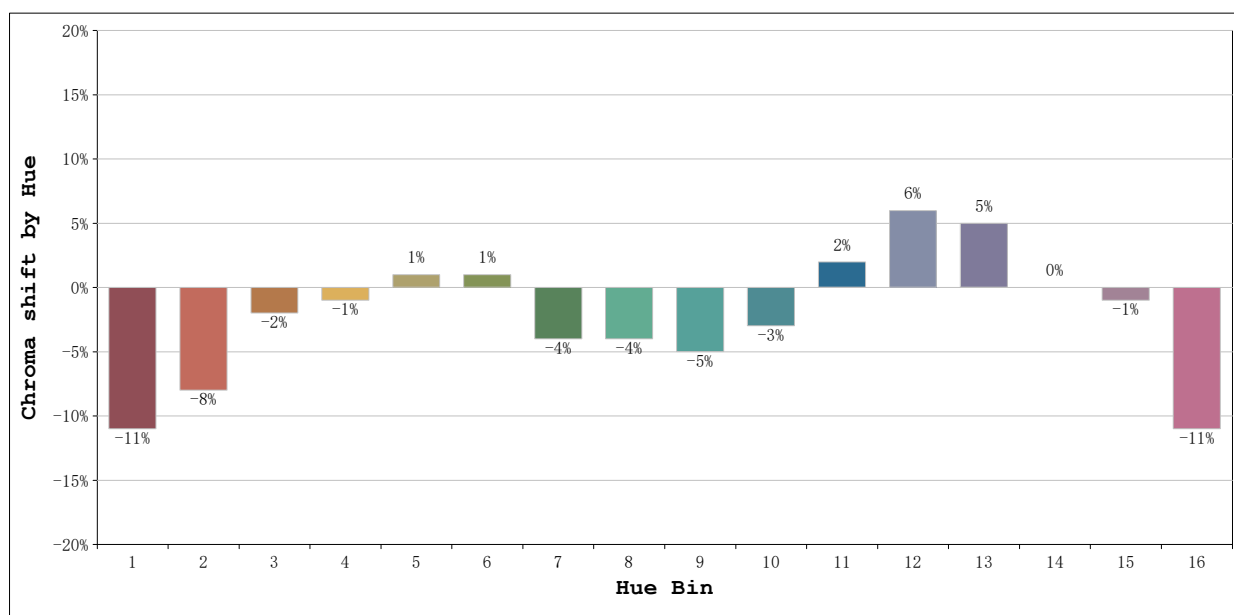
Number: 31.216
 Date: 2025-06-02 09:01:42
 Humidity: 40%
 Remarks: 100cm tira flexible

Rf: 82 **CCT: 2697 K** **u': 0.2628**
Rg: 95 **Duv: -0.0006** **v': 0.5266**



Model:Ecoled Elite 20 2700K
Tester:MªAngeles
Temperature:25Deg
Manufacturer:Luz Negra

Number: 31.216
Date:2025-06-02 09:01:42
Humidity:40%
Remarks:100cm tira flexible



			Graphic shift(%)	
Hue Bin	Hue Angle	Rf	Chroma	Hue
1	0.0° - 22.5°	73	-11	1
2	22.5° - 45.0°	78	-8	8
3	45.0° - 67.5°	74	-2	11
4	67.5° - 90.0°	89	-1	5
5	90.0° - 112.5°	93	1	3
6	112.5° - 135.0°	93	1	0
7	135.0° - 157.5°	86	-4	-5
8	157.5° - 180.0°	90	-4	0
9	180.0° - 202.5°	85	-5	5
10	202.5° - 225.0°	80	-3	10
11	225.0° - 247.5°	82	2	11
12	247.5° - 270.0°	83	6	3
13	270.0° - 292.5°	87	5	-9
14	292.5° - 315.0°	60	0	-22
15	315.0° - 337.5°	81	-1	-10
16	337.5° - 360.0°	70	-11	-11

Model:Ecoled Elite 20 2700K
 Tester:MªAngeles
 Temperature:25Deg
 Manufacturer:Luz Negra

Number: 31.216
 Date:2025-06-02 09:01:42
 Humidity:40%
 Remarks:100cm tira flexible